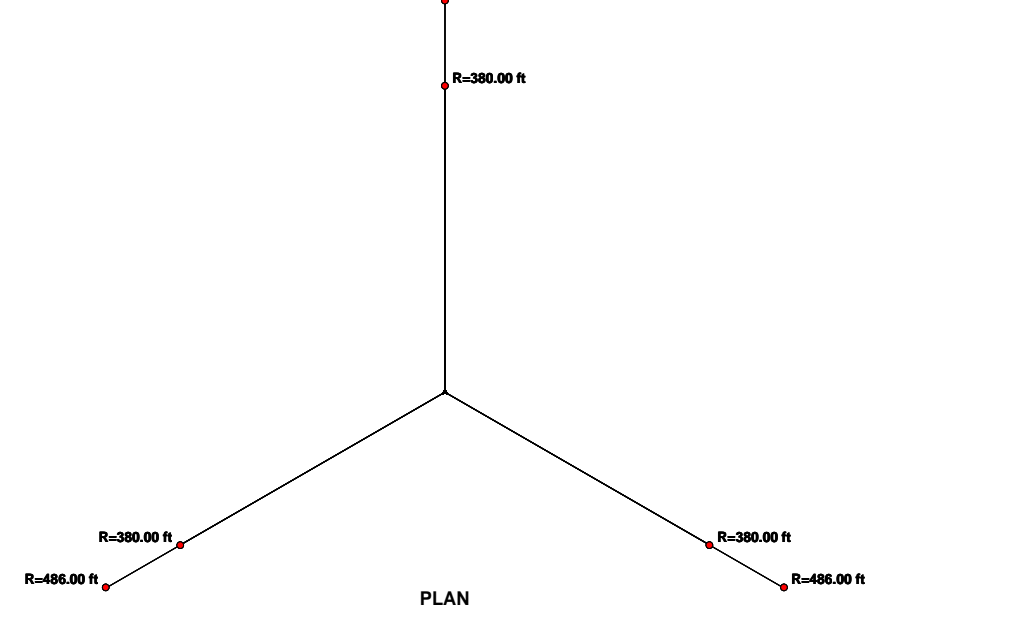
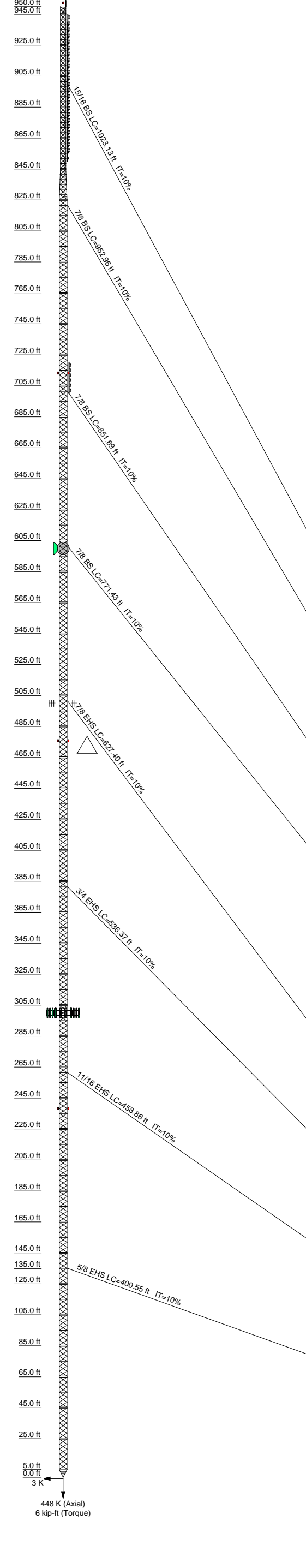


Section	T1	T2	T3	T4	T5	T6	T7	T8	T9	T10	T11	T12	T13	T14	T15	T16	T17	T18	T19	T20	T21	T22	T23	T24	T25	T26	T27	T28	T29	T30	T31	T32	T33	T34	T35	T36	T37	T38	T39	T40	T41	T42	T43	T44	T45	T46	T47	T48
Legs	SR 2 1/4												SR 2 1/4												SR 2 3/4																							
Leg Grade	SR 3/4												SR 3/4												SR 3/4																							
Diagonals	SR 3/4												SR 3/4												SR 3/4																							
Diagonal Grade	SR 3/4												SR 3/4												SR 3/4																							
Top Girts	SR 1												SR 1												SR 1																							
Top Girts	SR 1												SR 1												SR 1																							
Mid Girts	SR 1												SR 1												SR 1																							
Bottom Girts	SR 1												SR 1												SR 1																							
Bottom Girts	SR 1												SR 1												SR 1																							
Horizontals	N.A.												N.A.												N.A.																							
Sec. Horizontals	N.A.												N.A.												N.A.																							
Top Guy Pull-Offs	SR 1												SR 1												SR 1																							
Top Guy Pull-Offs	SR 1												SR 1												SR 1																							
Guy HI-Diagonals	SR 1												SR 1												SR 1																							
Guy HI-Diagonals	SR 1												SR 1												SR 1																							
Guy Low-Diagonals	SR 1												SR 1												SR 1																							
Guy Low-Diagonals	SR 1												SR 1												SR 1																							
Face Width (ft)	5												5												5																							
# Panels @ (ft)	282 @ 3.20833												282 @ 3.20833												282 @ 3.20833																							
Weight (K)	79.9												79.9												79.9																							



DESIGNED APPURTENANCE LOADING

TYPE	ELEVATION	TYPE	ELEVATION
lightning rod (optional)	952	yagi ant. (medium) (.875")	500
beacon lighting	951.5	yagi ant. (medium) (.875")	500
DCR-M10 [CaAc=80.00, W=1,420 lbs - Includes Mounts] North Face (4" flex)	945 - 855	beacon lighting	475
DCR-C10 [CaAc=67.00, W=1,280 lbs - Includes Mounts] North Face (3" flex)	940 - 850	beacon lighting	475
TUA-C4SP-5/16H-1-R-S Ant. [CaAc=101sqf, W=6375lbs - Includes Mounts] North Face (5" flex)	720.35 - 700.05	13' gate mounts	300
beacon lighting	712.5	13' gate mounts	300
beacon lighting	712.5	(4) typical 4' panels (1.625")	300
8' std dish (N 30 Deg. W) (1 5/8")	600	(4) typical 4' panels (1.625")	300
8' std dish (N 150 Deg. E) (1 5/8")	600	beacon lighting	237.5
		beacon lighting	237.5

SYMBOL LIST

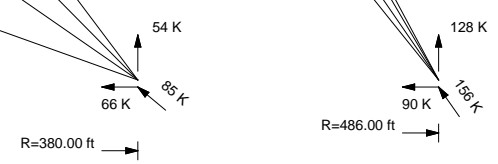
MARK	SIZE	MARK	SIZE
A	N.A.	C	2 @ 2.125
B	C8x11.5	D	5 @ 1.08333

MATERIAL STRENGTH

GRADE	Fy	Fu	GRADE	Fy	Fu
A572-50	50 ksi	65 ksi			

TOWER DESIGN NOTES

1. Tower designed for a 80 mph basic wind in accordance with the TIA/EIA-222-F Standard.
2. Deflections are based upon a 50 mph wind.
3. Tower designed for internal climbing ladder.



<p>Tower Innovations 2855 Hwy. 261 Newburgh, IN. 47630 Phone: (812) 853-0595 FAX: (812) 853-6652</p>	<p>Job: G2743 - 17563r9</p> <p>Project: Reynosa, Mexico</p>	
	<p>Client: _____</p> <p>Code: TIA/EIA-222-F</p> <p>Path: _____</p>	<p>Drawn by: T.I. Engineering Dept.</p> <p>Date: 12/19/06</p>
	<p>App'd: _____</p> <p>Scale: NTS</p> <p>Dwg No. E-1</p>	
	<p>© 2010 Current Design Build/PO/CO - Tall Walked Quad Tower - Side Mounted FM - G2743 - 17563r9.dwg</p>	