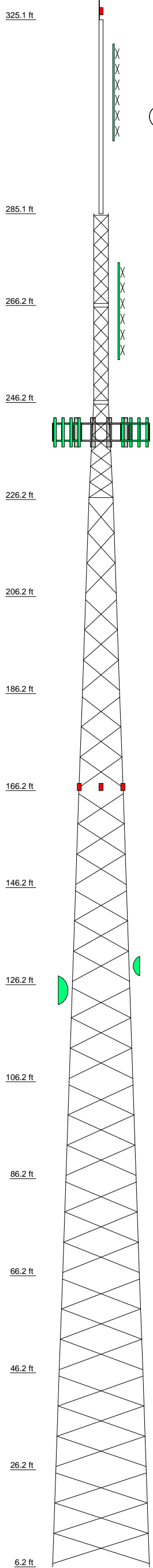


Section	T1	T2	T3	T4	T5	T6	T7	T8	T9	T10	T11	T12	T13	T14		
Legs	SR 2 1/2		SR 3		SR 3 1/4		SR 3 1/2		SR 3 3/4		SR 3 3/4		SR 3 3/4			
Leg Grade	MT2W65-58															
Diagonals	SR 7/8		SR 1 1/8		L2x2x3/16		L2x2x1/4		L2 1/2x2 1/2x3/16		L3x3x3/16		L3 1/2x3 1/2x1/4			
Diagonal Grade	A36															
Top Girts	N.A.															
Bottom Girts	N.A.															
Face Width (ft)	3		5		6.36364		7.72727		9.09091		10.45455		11.8182		13.1818	
# Panels @ (ft)	6 @ 3.025		12 @ 3.20833		2.0		2.5		2.6		3.2		3.3		3.6	
Weight (K)	2.3		1.3		1.4		2.2		1.9		2.0		2.0		2.5	



MAX. CORNER REACTIONS AT BASE:
 DOWN: 211 K
 UPLIFT: -171 K
 SHEAR: 14 K

AXIAL 57 K
 SHEAR 22 K
 MOMENT 3205 kip-ft

TORQUE 7 kip-ft
 61 mph WIND - 0.5000 in ICE

AXIAL 44 K
 SHEAR 24 K
 MOMENT 3399 kip-ft

TORQUE 11 kip-ft
 REACTIONS - 70 mph WIND

DESIGNED APPURTENANCE LOADING

TYPE	ELEVATION	TYPE	ELEVATION
lightning rod (optional)	327.1	(3) 13' gate mounts	240
Beacon Lighting	326.1	Side Light	166.15
3-Bay FM Main Antenna (4")	320.1 - 300.1	Side Light	166.15
3-Bay FM Standby Antenna (3")	275 - 255	Side Light	166.15
(4) Typical Panel Antenna (1.625")	240	4' Grid Dish (7/8")	130
(4) Typical Panel Antenna (1.625")	240	6' Grid Dish (7/8")	125
(4) Typical Panel Antenna (1.625")	240		

MATERIAL STRENGTH

GRADE	Fy	Fu	GRADE	Fy	Fu
A572-50	50 ksi	65 ksi	A36	36 ksi	58 ksi
MT2W65-58	58 ksi	65 ksi			

TOWER DESIGN NOTES

1. Tower designed for a 70 mph basic wind in accordance with the TIA/EIA-222-F Standard.
2. Tower is also designed for a 61 mph basic wind with 0.50 in ice.
3. Deflections are based upon a 50 mph wind.
4. Tower designed for step bolts.

<p>Tower Innovations Phone: (812) 853-0595 FAX: (812) 853-6652</p>	<p>Job: SS 560</p> <p>2855 Hwy. 261 Newburgh, IN. 47630</p>	<p>Project: Pittsburgh, PA.</p> <p>Client: _____</p> <p>Code: TIA/EIA-222-F</p> <p>Path: C:\0 - Current Design Runs\PDF\13 - Bolted SS Tower - Pole Mounted FM - SS560.dwg</p>	<p>Drawn by: T.I. Engineering Dept.</p> <p>Date: 12/20/06</p> <p>Scale: NTS</p> <p>Dwg No. E-1</p>
	<p>App'd: _____</p>		
	<p>Scale: NTS</p>		
	<p>Dwg No. E-1</p>		