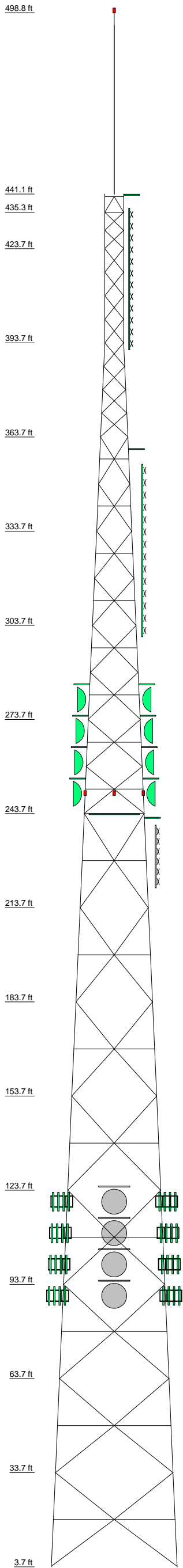
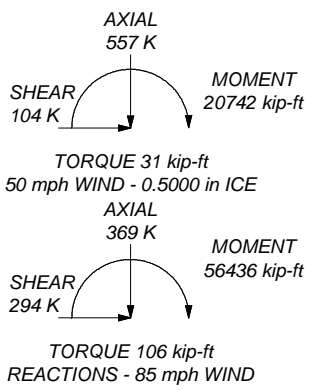


Section	T13	T12	T11	T10	T9	T8	T7	T6	T5	T4	T3	T2	T1	L3	L2	L1	
Legs	SR 9 1/8	SR 8 1/4	SR 8 5/8	SR 8 1/4	SR 7 1/2	SR 7	SR 7 1/2	SR 7	SR 5 1/4	SR 4 3/4	SR 4 1/2	SR 4 1/2	SR 4 1/4				
Leg Grade	2L5x5x1/2x3/4	2L5x5x3/8x3/4	2L5x5x1/2x3/4	2L5x5x1/2x3/4	2L5x5x1/2x3/4	2L5x5x1/2x3/4	2L5x5x1/2x3/4	2L5x5x1/2x3/4	2L3 1/2x3 1/2x1/4x3/4	2L3 1/2x3 1/2x1/4x3/4	L4x4x5/16	L4x4x5/16	L3 1/2x3 1/2x5/16				
Diagonals																	
Diagonal Grade																	
Top Girts																	
Bottom Girts																	
Horizontals																	
Sec. Horizontals																	
Inner Bracing																	
Face Width (ft)	40	37.3846	34.7692	32.1538	29.5385	26.9231	24.3077	21.6923	16.4615	13.8462	11.2308	8.61538	6	6	6	6	
# Panels @ (ft)		2 @ 14.9271	32.3	27.4	23.8	22.8	23.4	22.8	22.8	22.8	22.8	22.8	22.8	22.8	22.8	22.8	22.8
Weight (K)	266.1	32.8	32.3	27.4	23.8	22.8	23.4	22.8	22.8	22.8	22.8	22.8	22.8	22.8	22.8	22.8	22.8



MAX. CORNER REACTIONS AT BASE:
 DOWN: 1752 K
 UPLIFT: -1408 K
 SHEAR: 177 K



DESIGNED APPURTENANCE LOADING

TYPE	ELEVATION	TYPE	ELEVATION
Beacon Lighting	498.8	Internal Platform	243.67
TFU-31JTH-R O4SP : (CaAa = 68 sq. ft. ; Weight = 12.0 Kips) (6 1/8")	441.1	ice shield	242.5
ice shield	441	ALP-8	240 - 220
Future Side Mount Antenna : (CaAa = 82 sq. ft. ; Weight = 1.0 Kips) (6 1/8")	436.6 - 391.4	ice shield	125
ice shield	360	13' gate mounts	120
6-Bay FM	355 - 300	13' gate mounts	120
ice shield	285	(4) typical panels	120
ice shield	285	8' std dish (ew63)	120
8' std dish (ew63)	280	ice shield	115
8' std dish (ew63)	280	13' gate mounts	110
ice shield	275	13' gate mounts	110
ice shield	275	(4) typical panels	110
8' std dish (ew63)	270	(4) typical panels	110
8' std dish (ew63)	270	8' std dish (ew63)	110
ice shield	265	ice shield	105
ice shield	265	(4) typical panels	100
8' std dish (ew63)	260	13' gate mounts	100
8' std dish (ew63)	260	(4) typical panels	100
ice shield	255	13' gate mounts	100
ice shield	255	8' std dish (ew63)	100
8' std dish (ew63)	250	ice shield	95
8' std dish (ew63)	250	13' gate mounts	90
Beacon Lighting	249.5	(4) typical panels	90
Beacon Lighting	249.5	(4) typical panels	90
Beacon Lighting	249.5	13' gate mounts	90
Beacon Lighting	249.5	8' std dish (ew63)	90

SYMBOL LIST

MARK	SIZE	MARK	SIZE
A	2L4x4x3/8x3/4	C	1 @ 4.97667
B	MC18x45.8	D	2 @ 5.76833

MATERIAL STRENGTH

GRADE	Fy	Fu	GRADE	Fy	Fu
MT2W65-58	58 ksi	65 ksi	A36	36 ksi	58 ksi

TOWER DESIGN NOTES

1. Tower is located in San Juan County, Washington.
2. Tower designed for Exposure C to the TIA-222-G Standard.
3. Tower designed for a 85 mph basic wind in accordance with the TIA-222-G Standard.
4. Tower is also designed for a 50 mph basic wind with 0.50 in ice. Ice is considered to increase in thickness with height.
5. Deflections are based upon a 60 mph wind.
6. 53.70 ft TFU-31JTH-R O4SP is included for load transfer only.
7. V3s=85mph-0" V3s=50mph with .5" ice, Structure Class II, Topographic Category 3, and a Crest Height=2269' per TIA/EIA-222-G Standard.
8. Tower designed for step bolts up three legs and internal climbing ladder up to the platform @ 243.7'.
9. Tower designed using V-mount for flex line runs.

<p>Tower Innovations Phone: (812) 853-0595 FAX: (812) 853-6652</p>	<p>Tower Innovations 2855 Hwy. 261 Newburgh, IN. 47630</p>	<p>Job: S2638 - 16216r18 Project: Orcas Island, WA</p>	<p>Client: T.I. Engineering Dept. Date: 12/19/06</p>	<p>App'd: Scale: NTS Dwg No. E-1</p>
	<p>Code: TIA-222-G</p>	<p>Path:</p>	<p>C:\0 - Current Design Runs\PDF\14 - Bolted SS Tower - Top Mounted TV - S2638 - 16216r18.dwg</p>	
	<p>©/0 - Current Design Runs\PDF\14 - Bolted SS Tower - Top Mounted TV - S2638 - 16216r18.dwg</p>			
	<p>Scale: NTS</p>			