

Spacers (When Required) Are To Be Located Between Pipe Attachment Plate And Pipe Mount Clamp. This Will Be Required On Sloped Legs Only And Will Be Placed On The Upper Clamping Assembly.

Spacer Information Table

Req'd Space	Face Change Per 20' In Height	Angle Range / Slope Of Leg	Req'd Spacers
3/8"	3" - 6"	.447° - .716°	3/8"
5/8"	6" - 9"	.716° - 1.19°	5/8"
1"	9" - 1' 3"	1.19° - 1.909°	1"
1-1/2"	1' 3" - 1' 9"	1.79° - 2.86°	1/2", # 1"
2-1/2"	1' 9" - 3'	2.86° - 4.97°	3/8", 1/2", 5/8", # 1"
3-1/2"	3' - 4.25'	4.97° - 7.08°	3/8", 1/2", 5/8", 1" # 1"

Note : The Above Table Is To Aid In Installation And Provide Guidance On Spacer Requirements. These Spacers Are To Be Used On Sloped Legs Only. When Spacers Are Required, They Will Only Be Placed In The Upper Clamp Assembly. The Upper Clamp Assembly Should Be Adjusted Between 30" To 48" From The Lower Clamp Assembly To Accomodate For Exact Leg Taper To Bring Pipe Into A Vertical Plane.

STEEL PARTS

ITEM NO.	PART NO.	DESCRIPTION	QTY.
1	UM018	Universal Pipe Mount Clamp	2
2	UM019	Universal Backing Clamp	2
3	UM020	Pipe Attachment Plate	2
4	MP4040X063	4" Sch 40 Pipe x 63" Long	1
5	SPL037-0607-01	3/8" Spacer Plate	1
6	SPL050-0607-01	1/2" Spacer Plate	1
7	SPL062-0607-01	5/8" Spacer Plate	1
8	SPL100-0607-01	1" Spacer Plate	2

HARDWARE

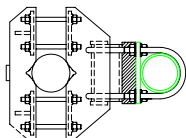
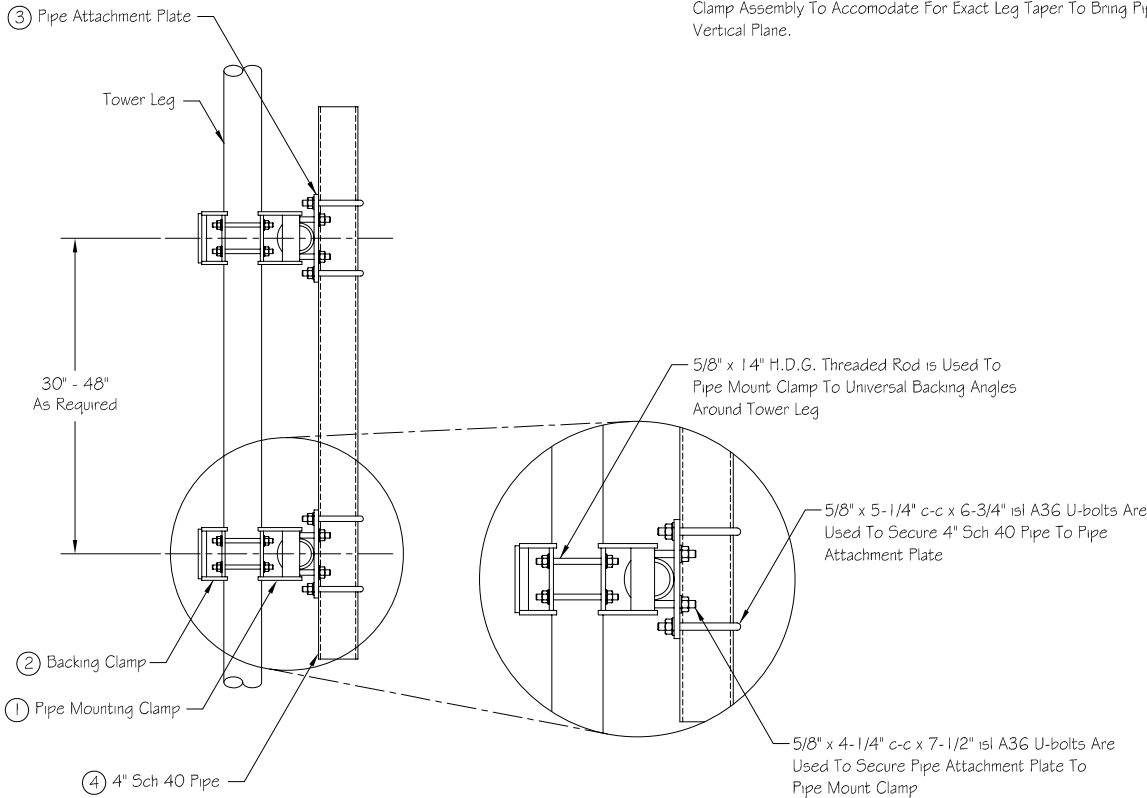
ITEM NO.	PART NO.	DESCRIPTION	QTY.
1	TR62X1400G	5/8" x 14" H.D.G. Threaded Rod	8
2	UB62X425X750	5/8" x 4-1/4" c-c x 7-1/2" isl H.D.G. U-Bolts 4" Thd.	4
3	UB62X525G	5/8" x 5-1/4" c-c x 6-3/4" isl H.D.G. U-Bolts	4
4	TR62X1000G	5/8" x 10" H.D.G. Threaded Rod	8
5	NU062G	5/8" H.D.G. Nuts	40
6	WLO62G	5/8" H.D.G. Lockwashers	40

WEIGHT & ENGINEERING INFORMATION

KIT NO.	WEIGHT (lbs.)	DESCRIPTION	CaAc (Sq. Ft.)
KDM15107T40-084	205	Universal Pipe Mount	2.60

KIT USE INFORMATION

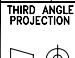
- 1.) This Kit Is Designed To Adapt To The Following Member Ranges.
 - A.) 2" x 2" Thru 1 1/2" x 1 1/2" 60° Angle.
 - B.) 2" x 2" Thru 8" x 8" 90° Angle.
 - C.) 1-1/2" Ø Thru 10-3/4" Ø Round Members.
- 2.) This Mounting Assembly Provides A 4-1/2" Ø Vertical Mounting Pipe To Adapt Antenna Mounts To Tapered Tower Sections, Angle Leg Towers, And Large Round Leg Towers.
- 3.) 5/8" x 10" Thd Rod Is Provided To Minimize Installing Where 1 1/4" Thd. Rod Is Not Required On Smaller Tower Members.
- 4.) Extra 5/8" Ø Nuts Are Provided For Ease Of Installation So That You Can Double Nut Thd Rod To Prevent Thd Rod From Spinning During Installation.
- 5.) Steel Parts Indicated Above With An " * " Will Be Packed With The Hardware.




 PH# (812) 853-0595
 FAX# (812) 853-6652
 2855 HIGHWAY 261
 NEWBURGH, IN. 47630

REV. #	DESCRIPTION	DATE	APP.	DRAWN	DATE
				J.J.B.	6-16-00
				CHECK	DATE
				APPROVAL	DATE

THIRD ANGLE PROJECTION



COMPANY CONFIDENTIAL INFORMATION CONTAINED HEREIN IS CONFIDENTIAL AND IS TO BE USED SOLELY FOR THE PURPOSE PROVIDED, AND IT IS NOT TO BE DISCLOSED TO OTHERS WITHOUT THE PRIOR WRITTEN CONSENT OF TOWER INNOVATIONS

TOLERANCES

.X± 3/32" ANGLES± 2°

.XX± 3/32" DRILLED HOLE± #1/32"

.XXX± 1/16" BURNED HOLE± #1/16"

UNLESS OTHERWISE SPECIFIED DIMENSIONS ARE IN:

INCHES

DWG NO. **KDM15107T40-084**

REV **0**

DO NOT SCALE DRAWING