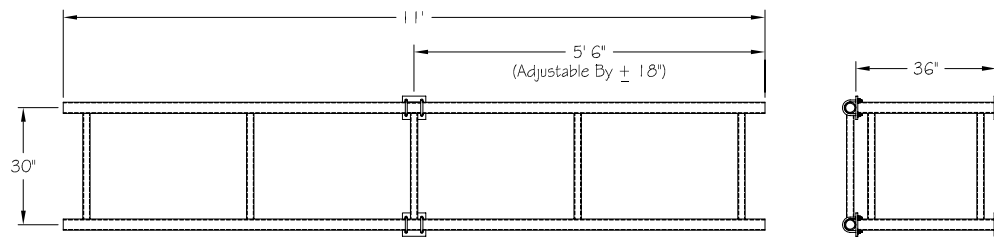


Anti-Rot. Rods Can Be Attached To Either Of The 2 Outer Vertical Pipes On Face Frame And To Either Of The 2 Tower Legs Opposite The 36\"/>



STEEL PARTS

ITEM NO.	PART NO.	DESCRIPTION	QTY.
1*	CPS125575-50-01	Saddle Clamp For 1-1/4\"/>	

HARDWARE

ITEM NO.	PART NO.	DESCRIPTION	QTY.
1	TR50X0800G	1/2\"/>	

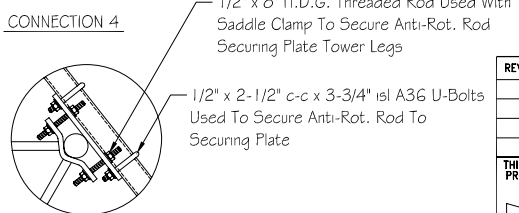
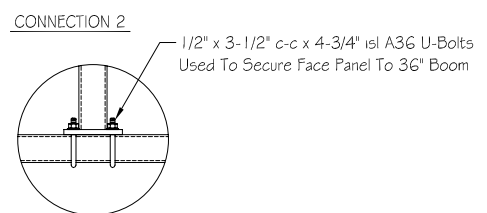
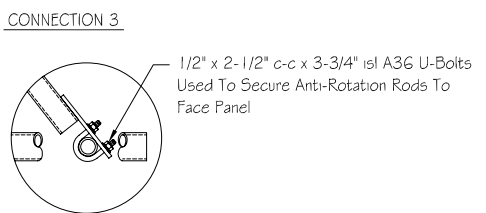
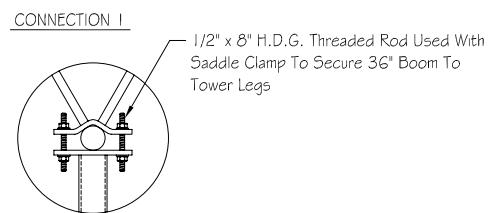
** Flatwashers Are To Be Used At All Slotted Hole Locations !! **

WEIGHT & ENGINEERING INFORMATION

KIT NO.	WEIGHT (lbs.)	DESCRIPTION	CaAc (Sq. Ft.)
KGM11-2472	N/A	11' Gate Mount	10.6

KIT USE INFORMATION

- 1.) This Kit Is Designed To Withstand The Loading From Four Panel Antennas @ 110 mph.
- 2.) Will Mount To Any Straight Section 2' - 6' Face With 1-1/4\"/>



REV. #	DESCRIPTION	DATE	APP.	DRAWN J.J.B.	DATE 10-21-04

Tower Innovations
 PH# (812) 853-0595
 FAX# (812) 853-6652
 2855 HIGHWAY 261
 NEWBURGH, IN. 47630

TITLE
 UNIVERSAL 11' GATE MOUNT

DWG NO.
 KGM11-2472

REV
 -

DO NOT SCALE DRAWING

THIRD ANGLE PROJECTION

COMPANY CONFIDENTIAL INFORMATION CONTAINED HEREIN IS CONFIDENTIAL. IT IS TO BE USED SOLELY FOR THE PURPOSE PROVIDED, AND IT IS NOT TO BE DISCLOSED TO OTHERS WITHOUT THE PRIOR WRITTEN CONSENT OF TOWER INNOVATIONS

TOLERANCES
 .X± 3/32" ANGLES± 2"
 .XX± 3/32" DRILLED HOLE± #1/32"
 .XXX± 1/16" BURNED HOLE± #1/16"

UNLESS OTHERWISE SPECIFIED DIMENSIONS ARE IN: INCHES