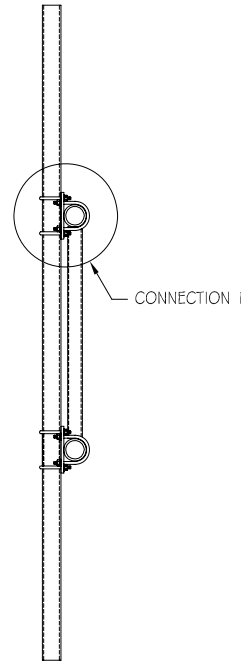


Typical Installation



STEEL PARTS

ITEM NO.	PART NO.	DESCRIPTION	QTY.
1*	GMAMP-02-03	Antenna Pipe Mounting Plate	2
2	MP2040X063	2" Sch 40 x 63" Long Antenna mounting Pipe	1

HARDWARE

ITEM NO.	PART NO.	DESCRIPTION	QTY.
1	UB37X350	3/8" x 3-1/2" c-c x 4-1/2" Isl A-3G U-Bolts	4
2	UB37X300	3/8" x 3" c-c x 4" Isl A-3G U-Bolts	4
3	NU037G	3/8" H.D.G. Nuts	16
4	WLO37G	3/8" H.D.G. Lockwashers	16
5	WFO37G	3/8" H.D.G. Flatwashers	16

** Flatwashers Are To Be Used At All Slotted Hole Locations !! **

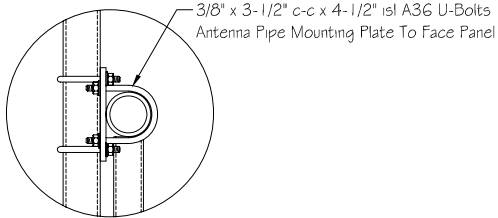
WEIGHT & ENGINEERING INFORMATION

KIT NO.	WEIGHT (lbs.)	DESCRIPTION	CaAc (Sq. Ft.)
KGM2040P063-01	32	2" Sch 40 x 63" Long Pipe	.75

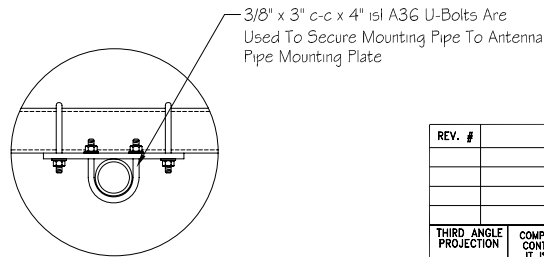
KIT USE INFORMATION

- 1.) This Kit Is Designed To Be Used With 2-1/2" Horizontal Pipe Mounting Panels.
- 2.) Steel Parts Indicated Above With An "*" Will Be Packed With The Hardware.

CONNECTION 1



CONNECTION 2



3/8" x 3" c-c x 4" Isl A3G U-Bolts Are Used To Secure Mounting Pipe To Antenna Pipe Mounting Plate

REV. #	DESCRIPTION	DATE	APP.	DRAWN R.E.H.	DATE
					6-16-00
				CHECK	DATE
				APPROVAL	DATE

THIRD ANGLE PROJECTION	COMPANY CONFIDENTIAL INFORMATION CONTAINED HEREIN IS CONFIDENTIAL. IT IS TO BE USED SOLELY FOR THE PURPOSE PROVIDED, AND IT IS NOT TO BE DISCLOSED TO OTHERS WITHOUT THE PRIOR WRITTEN CONSENT OF TOWER INNOVATIONS	TOLERANCES .X± 3/32" .XX± 3/32" .XXX± 1/16"	ANGLES± 2° DRILLED HOLE± #1/32" BURNED HOLE± #1/16"	UNLESS OTHERWISE SPECIFIED DIMENSIONS ARE IN: INCHES
------------------------	---	--	---	---

PH# (812) 853-0595 FAX# (812) 853-6652 2855 HIGHWAY 261 NEWBURGH, IN. 47630	TOWER INNOVATIONS
TITLE Standard 2" Sch 40 x 63" Pipe	
DWG NO. KGM2040P063-01	REV -
DO NOT SCALE DRAWING	