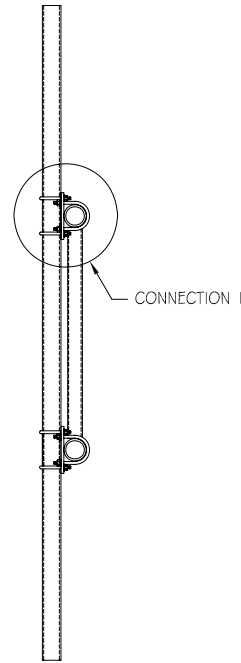


Typical Installation



STEEL PARTS

ITEM NO.	PART NO.	DESCRIPTION	QTY.
1*	GMAMP-02-03	Antenna Pipe Mounting Plate	2
2	MP2540X084	2-1/2" Sch 40 x 84" Long Antenna mounting Pipe	1

HARDWARE

ITEM NO.	PART NO.	DESCRIPTION	QTY.
1	UB37X350G	3/8" x 3-1/2" c-c x 4-1/2" Isl A-36 U-Bolts	8
2	NU037G	3/8" H.D.G. Nuts	16
3	WLO37G	3/8" H.D.G. Lockwashers	16
4	WFO37G	3/8" H.D.G. Flatwashers	16

\*\* Flatwashers Are To Be Used At All Slotted Hole Locations !! \*\*

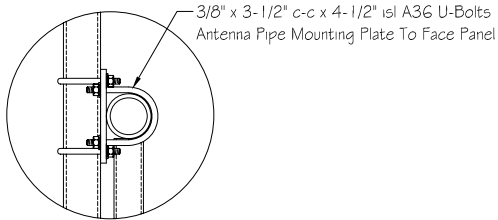
WEIGHT & ENGINEERING INFORMATION

KIT NO.	WEIGHT (lbs.)	DESCRIPTION	CaAc ( Sq. Ft.)
KGM2540P084-01	54	2-1/2" Sch 40 x 84" Long Pipe	.75

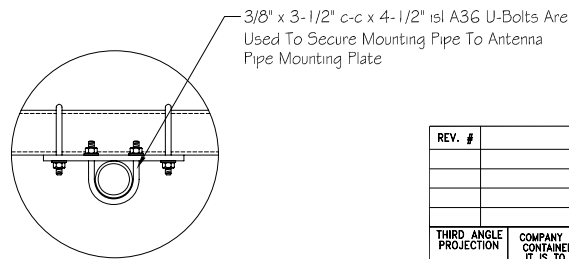
KIT USE INFORMATION


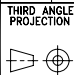
- 1.) This Kit Is Designed To Be Used With 2-1/2" Horizontal Pipe Mounting Panels.
- 2.) Steel Parts Indicated Above With An "\*" Will Be Packed With The Hardware.

CONNECTION 1



CONNECTION 2



REV. #	DESCRIPTION	DATE	APP.	DRAWN R.E.H.	DATE 6-16-00	 PH# (812) 853-0595 FAX# (812) 853-6652 2855 HIGHWAY 261 NEWBURGH, IN. 47630
				CHECK	DATE	
				APPROVAL	DATE	
THIRD ANGLE PROJECTION 						DWG NO. <b>KGM2540P084-01</b>
COMPANY CONFIDENTIAL INFORMATION CONTAINED HEREIN IS CONFIDENTIAL. IT IS TO BE USED SOLELY FOR THE PURPOSE PROVIDED, AND IT IS NOT TO BE DISCLOSED TO OTHERS WITHOUT THE PRIOR WRITTEN CONSENT OF TOWER INNOVATIONS.						
TOLERANCES .X± 3/32" ANGLES± 2" .XX± 3/32" DRILLED HOLE± #1/32" .XXX± 1/16" BURNED HOLE± #1/16"						UNLESS OTHERWISE SPECIFIED DIMENSIONS ARE IN: INCHES
						TITLE <b>Standard 2-1/2" Sch 40 x 84" Pipe</b>
						DO NOT SCALE DRAWING