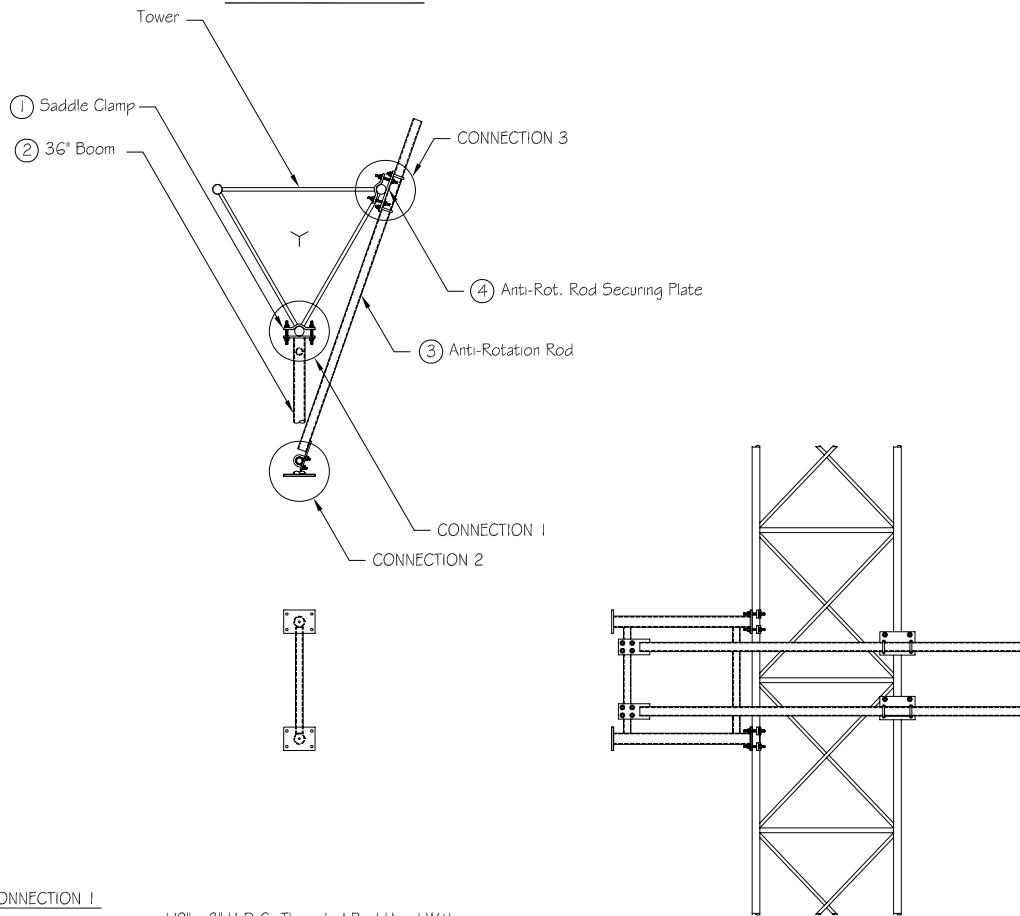
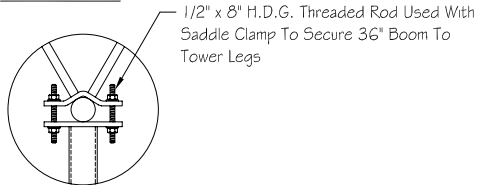


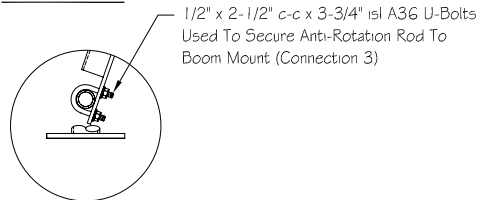
Typical Installation



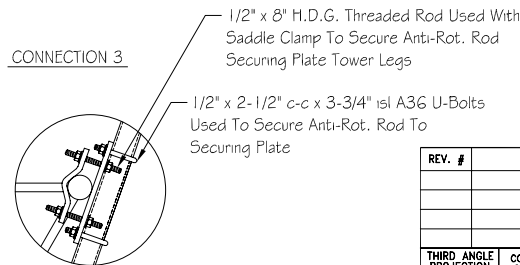
CONNECTION 1



CONNECTION 2



CONNECTION 3



STEEL PARTS

ITEM NO.	PART NO.	DESCRIPTION	QTY.
1 *	CPS125575-50-01	Saddle Clamp For 1-1/4" - 5-3/4" Round Leg	6
2	UM013-3G	36" Boom	1
3	GMAR-SB	Anti-Rot. Rod For 18" - 48" Tower Face	2
4 *	GMAP-FF-01	Anti-Rotation Rod Securing Plate	2

HARDWARE

ITEM NO.	PART NO.	DESCRIPTION	QTY.
1	TR50X0800G	1/2" x 8" H.D.G. Threaded Rod	12
2	UB50X250G	1/2" x 2-1/2" c-c x 3-3/4" A36 U-Bolts	8
3	NU050G	1/2" H.D.G. Nuts	40
4	WLO50G	1/2" H.D.G. Lockwashers	40
5	WFO50G	1/2" H.D.G. Flatwashers	32

** Flatwashers Are To Be Used At All Slotted Hole Locations !! **

WEIGHT & ENGINEERING INFORMATION

KIT NO.	WEIGHT (lbs.)	DESCRIPTION	CaAc (Sq. Ft.)
KSA3-1848-01	148.6	3' Boom Mount	N/A

KIT USE INFORMATION

- 1.) This Kit Is Designed To Withstand The Loading From Four Whip Antennas @ 110 mph.
- 2.) Will Mount To Any Straight Section 18" - 48" Face With 1-1/4" Thru 5-3/4" Dia. Round Leg.
- 3.) Antenna Mounting Pipes Not Included !
- 4.) Steel Parts Indicated Above With An "*" Will Be Packed With The Hardware.



PH# (812) 853-0595
FAX# (812) 853-6652
2855 HIGHWAY 261
NEWBURGH, IN. 47630

REV. #	DESCRIPTION	DATE	APP.	DRAWN	DATE
				J.J.B.	11-13-00
				CHECK	DATE
				APPROVAL	DATE

TITLE	DWG NO.	REV
UNIVERSAL 3' BOOM MOUNT KIT	KSA3-1848-01	-
DO NOT SCALE DRAWING		

	COMPANY CONFIDENTIAL INFORMATION CONTAINED HEREIN IS CONFIDENTIAL. IT IS TO BE USED SOLELY FOR THE PURPOSE PROVIDED, AND IT IS NOT TO BE DISCLOSED TO OTHERS WITHOUT THE PRIOR WRITTEN CONSENT OF TOWER INNOVATIONS	TOLERANCES		UNLESS OTHERWISE SPECIFIED DIMENSIONS ARE IN: INCHES
		.X± 3/32"	ANGLES± 2°	
		.XX± 3/32"	DRILLED HOLE± #1/32"	
		.XXX± 1/16"	BURNED HOLE± #1/16"	