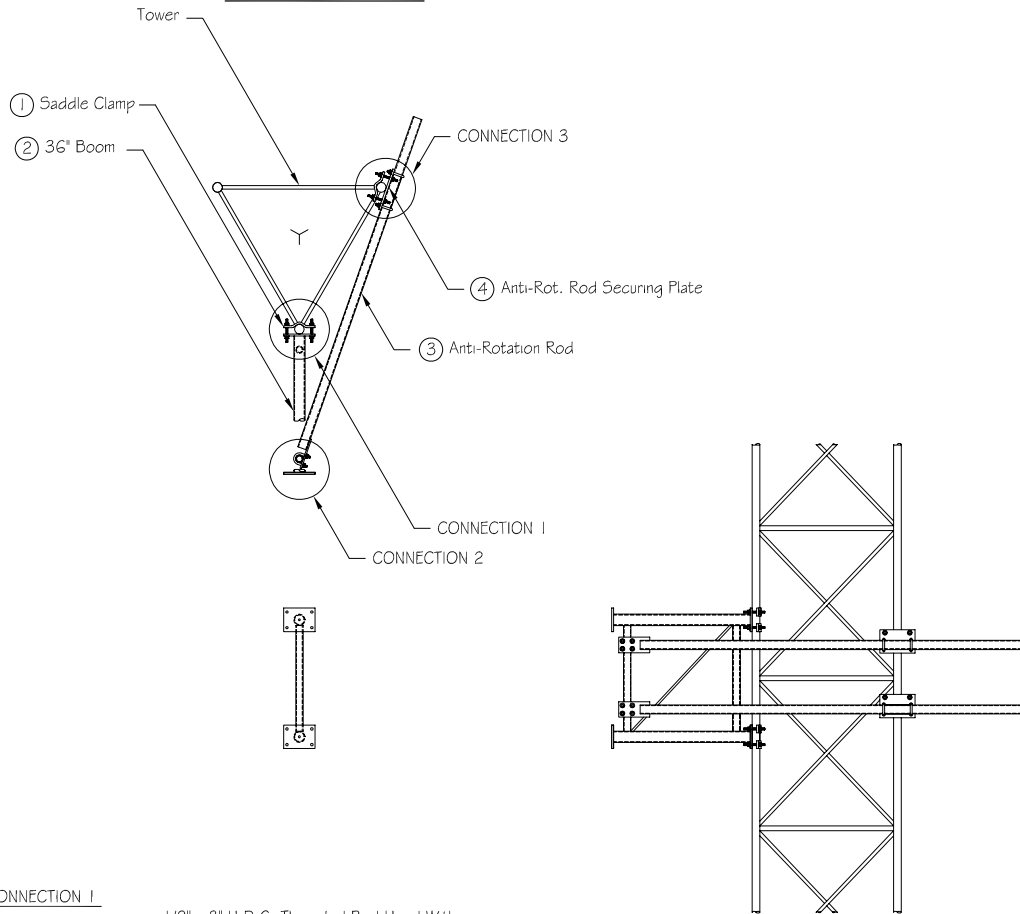
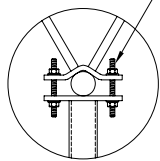


### Typical Installation

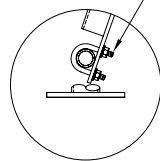


#### CONNECTION 1



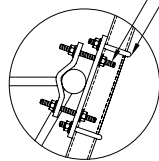
1/2" x 8" H.D.G. Threaded Rod Used With Saddle Clamp To Secure 48" Boom To Tower Legs

#### CONNECTION 2



1/2" x 2-1/2" c-c x 3-3/4" IS1 A36 U-Bolts Used To Secure Anti-Rotation Rod To Boom Mount (Connection 3)

#### CONNECTION 3



1/2" x 8" H.D.G. Threaded Rod Used With Saddle Clamp To Secure Anti-Rot. Rod Securing Plate Tower Legs  
1/2" x 2-1/2" c-c x 3-3/4" IS1 A36 U-Bolts Used To Secure Anti-Rot. Rod To Securing Plate

#### STEEL PARTS

ITEM NO.	PART NO.	DESCRIPTION	QTY.
1 *	CPS125575-50-01	Saddle Clamp For 1-1/4" - 5-3/4" Round Leg	6
2	UMO15-48	36" Boom	1
3	GMAR-SB	Anti-Rot. Rod For 18" - 48" Tower Face	2
4 *	GMARP-FF-01	Anti-Rotation Rod Securing Plate	2

#### HARDWARE

ITEM NO.	PART NO.	DESCRIPTION	QTY.
1	TR50X0800G	1/2" x 8" H.D.G. Threaded Rod	12
2	UB50X250	1/2" x 2-1/2" c-c x 3-3/4" IS1 A-36 U-Bolts	8
3	NU050G	1/2" H.D.G. Nuts	40
4	WLO50G	1/2" H.D.G. Lockwashers	40
5	WFO50G	1/2" H.D.G. Flatwashers	32

\*\* Flatwashers Are To Be Used At All Slotted Hole Locations !! \*\*

#### WEIGHT & ENGINEERING INFORMATION

KIT NO.	WEIGHT (lbs.)	DESCRIPTION	CaAc ( Sq. Ft.)
KSA4-1848-01	148.6	4' Boom Mount	N/A


#### KIT USE INFORMATION

- 1.) This Kit Is Designed To Withstand The Loading From Four Whip Antennas @ 110 mph.
- 2.) Will Mount To Any Straight Section 18" - 48" Face With 1-1/4" Thru 5-3/4" Dia. Round Leg.
- 3.) Antenna Mounting Pipes Not Included !
- 4.) Steel Parts Indicated Above With An "\*" Will Be Packed With The Hardware.

REV. #	DESCRIPTION	DATE	APP.	DRAWN	DATE
				J.J.B.	1-24-02
				CHECK	DATE
				APPROVAL	DATE

THIRD ANGLE PROJECTION	COMPANY CONFIDENTIAL INFORMATION CONTAINED HEREIN IS CONFIDENTIAL. IT IS TO BE USED SOLELY FOR THE PURPOSE PROVIDED, AND IT IS NOT TO BE DISCLOSED TO OTHERS WITHOUT THE PRIOR WRITTEN CONSENT OF TOWER INNOVATIONS	TOLERANCES .X± 3/32" ANGLES± 2° .XX± 3/32" DRILLED HOLE± #1/32" .XXX± 1/16" BURNED HOLE± #1/16"	UNLESS OTHERWISE SPECIFIED DIMENSIONS ARE IN: INCHES
------------------------	---	--	--



**Tower Innovations**

PH# (812) 853-0595  
FAX# (812) 853-6652  
2855 HIGHWAY 261  
NEWBURGH, IN. 47630

---

**TITLE**  
**UNIVERSAL 4' BOOM MOUNT**

---

**DWG NO.**  
**KSA4-1848-01**

---

DO NOT SCALE DRAWING