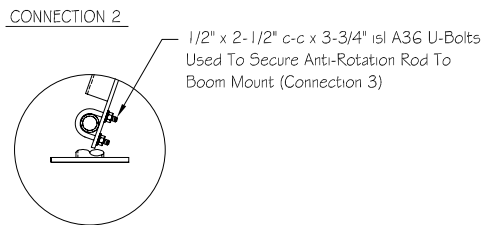
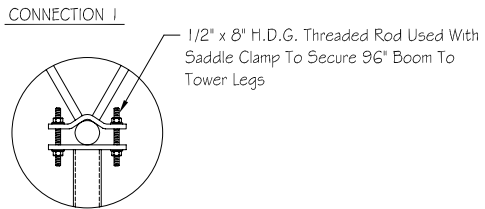
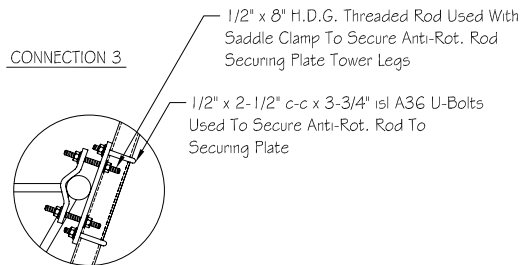
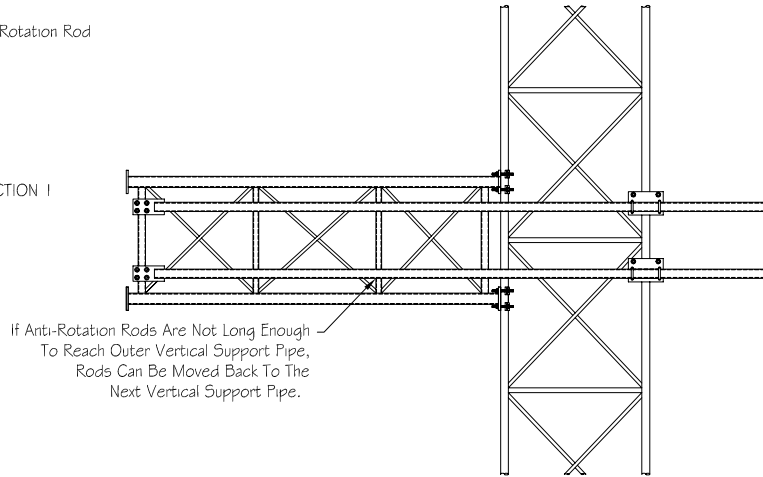
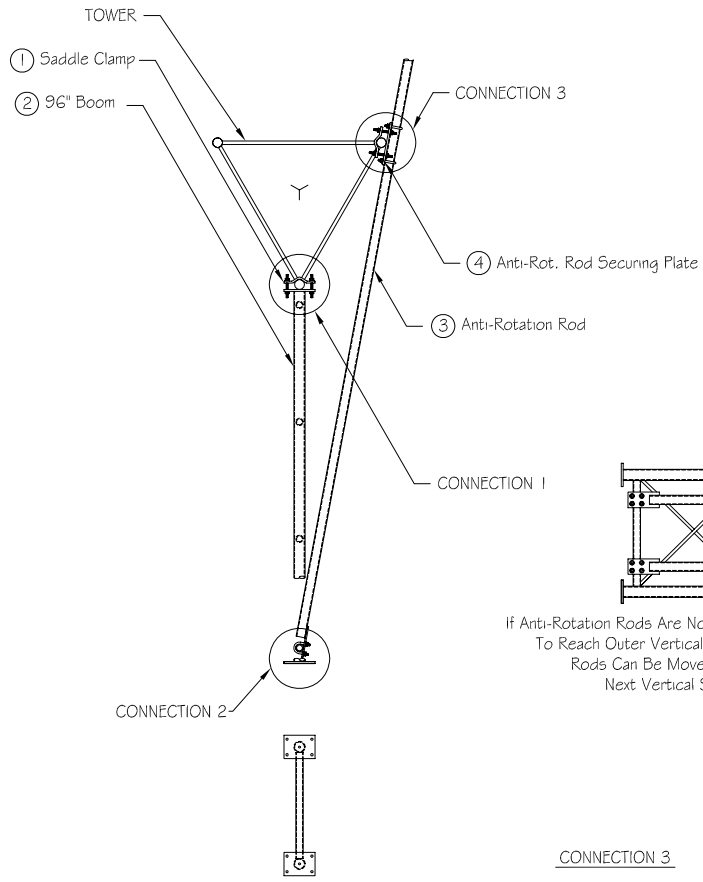


### Typical Installation



### STEEL PARTS

ITEM NO.	PART NO.	DESCRIPTION	QTY.
1 *	CPS125575-50-01	Saddle Clamp For 1 - 1/4" - 5-3/4" Round Leg	6
2	UMO17-96	96" Boom	1
3	GMAR-2472	Anti Rod For 24" - 60" Tower Face	2
4 *	GMARP-FF-01	Anti-Rotation Rod Securing Plate	2

### HARDWARE

ITEM NO.	PART NO.	DESCRIPTION	QTY.
1	TR50X0800G	1/2" x 8" H.D.G. Threaded Rod	12
2	UB50X250G	1/2" x 2-1/2" c-c x 3-3/4" Isl A-36 U-Bolts	8
3	NU050G	1/2" H.D.G. Nuts	40
4	WLO50G	1/2" H.D.G. Lockwashers	40
5	WFO50G	1/2" H.D.G. Flatwashers	32

\*\* Flatwashers Are To Be Used At All Slotted Hole Locations !! \*\*

### WEIGHT & ENGINEERING INFORMATION

KIT NO.	WEIGHT (lb..)	DESCRIPTION	CaAc ( Sq. Ft.)
KSA8-2460-01	237.8	8' Boom Mount	N/A

### KIT USE INFORMATION

- 1.) This Kit Is Designed To Withstand The Loading From Four Whip Antennas @ 110 mph.
- 2.) Will Mount To Any Straight Section 24"-60" Face With 1 - 1/4" Thru 5-3/4" Dia. Round Leg.
- 3.) Antenna Mounting Pipes Not Included !
- 4.) Steel Parts Indicated Above With An "\*" Will Be Packed With The Hardware.



PH# (812) 853-0595  
 FAX# (812) 853-6652  
 2855 HIGHWAY 261  
 NEWBURGH, IN. 47630

TITLE  
**Universal 8' Boom Mount**

REV. #	DESCRIPTION	DATE	APP.	DRAWN	DATE
				J.J.B.	12-1-00
				CHECK	DATE
				APPROVAL	DATE

	COMPANY CONFIDENTIAL INFORMATION CONTAINED HEREIN IS CONFIDENTIAL. IT IS TO BE USED SOLELY FOR THE PURPOSE PROVIDED, AND IT IS NOT TO BE DISCLOSED TO OTHERS WITHOUT THE PRIOR WRITTEN CONSENT OF TOWER INNOVATIONS.	TOLERANCES		UNLESS OTHERWISE SPECIFIED DIMENSIONS ARE IN: INCHES
		.X± 3/32"	ANGLES± 2°	
		.XX± 3/32"	DRILLED HOLE± #1/32"	
		.XXX± 1/16"	BURNED HOLE± #1/16"	

DWG NO. <b>KSA8-2460-01</b>	REV -
DO NOT SCALE DRAWING	