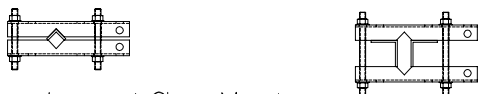
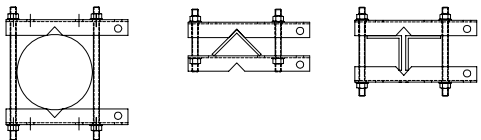


Approved Clamp Mounting

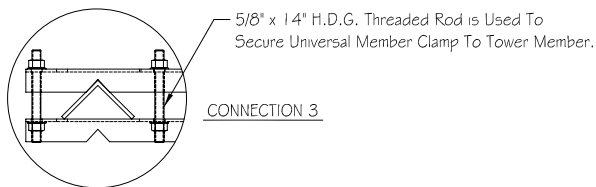
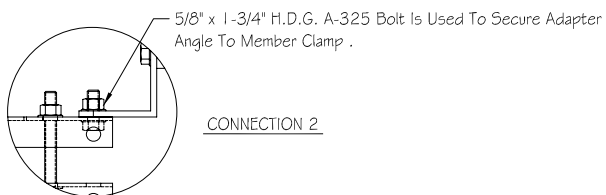
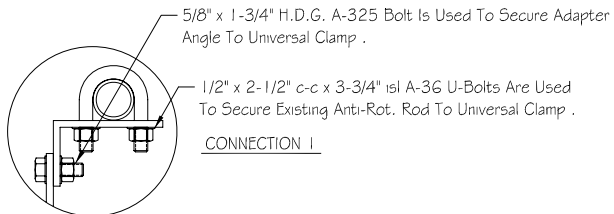
Note 1 : INSTALL THREADED ROD AS CLOSE TO MEMBER AS POSSIBLE .

Note 2 : INSTALL CLAMP SO THAT OUTER MOUNTING HOLES FOR ANTI-ROTATION ROD MOUNTING PROTRUDE FROM TOWER FACE TOWARD ANTENNA MOUNT .



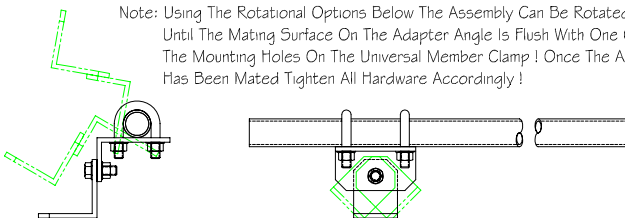
Incorrect Clamp Mounting

Note: DO NOT INSTALL SO THAT THE EDGE OF V-NOTCH IS CLOSE TO EDGE OF ANGLE.

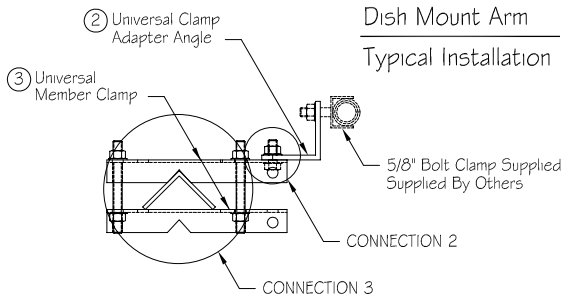


Rotational Options

Note: Using The Rotational Options Below The Assembly Can Be Rotated Until The Mating Surface On The Adapter Angle Is Flush With One Of The Mounting Holes On The Universal Member Clamp ! Once The Assembly Has Been Mated Tighten All Hardware Accordingly !

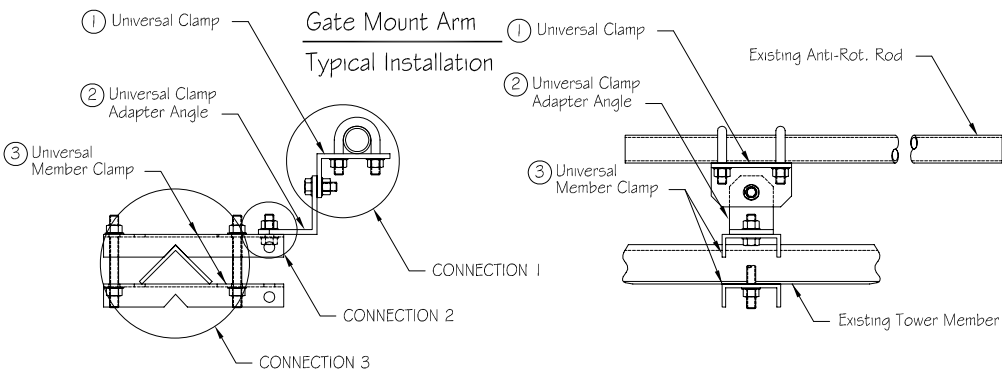


Dish Mount Arm Typical Installation



Note: When Attaching A Dish Anti-Rotation Arm With 5/8" Bolt Clamp, (Supplied By Others) , The Universal Clamp (Item 1) , Will Not Be Required. The Dish Arm Will Bolt Directly To The Universal Clamp Adapter Angle . The Universal Clamp Adapter Angle Has A Single 1 1/16" ° Hole For Attachment.

Gate Mount Arm Typical Installation



STEEL PARTS

ITEM NO.	PART NO.	DESCRIPTION	QTY.
1 *	UM002	Universal Clamp For 1-1/2" Sch 40 Rod	1
2 *	UM004	Universal Clamp Adapter Angle	1
3 *	UM006	Universal Member Clamp	2

HARDWARE

ITEM NO.	PART NO.	DESCRIPTION	QTY.
1	BTOG2X175	5/8" x 1-3/4" H.D.G. Bolt	2
2	UB50X250G	1/2" x 2-1/2" c-c x 3-3/4" Isl H.D.G. U-Bolts	2
3	TRG2X1400G	5/8" x 14" H.D.G. Threaded Rod	2
4	NU062G	5/8" H.D.G. Nuts	6
5	WLO62G	5/8" H.D.G. Lockwashers	6
6	WBO62G	5/8" H.D.G. Beveled Washers	1
7	NU050G	1/2" H.D.G. Nuts	4
8	WLO50G	1/2" H.D.G. Lockwashers	4

** Beveled Washer Is To Be Used If Adapter Angle Is Attached On **
 ** Flange Of Channel On The Universal Member Clamp !! **

WEIGHT & ENGINEERING INFORMATION

KIT NO.	WEIGHT (lbs.)	DESCRIPTION	CaAc (Sq. Ft.)
KTC1540-01	19	Universal Tie-Back Clamp Assembly	.625

KIT USE INFORMATION

- This Kit Is Designed To Adapt To The Following Member Ranges.
 - 2" x 2" Thru 7" x 7" 60° Single Angle.
 - 2" x 2" Thru 5" x 5" 90° Single Angle.
 - 1-1/2" Ø Thru 7-3/4" Ø Round Members.
 - 2" x 2" Thru 3-1/2 x 3-1/2" 90° Double Angle.
- This Mounting Assembly Provides For 1-1/2" Ø Anti-Rotation Rod Attachment To Any Member Size Listed Above. The Tower Member Can Be Diagonal, Horizontal, Or A Tower Leg.
- Steel Parts Indicated Above With An "*" Will Be Packed With The Hardware.



PH# (812) 853-0595
 FAX# (812) 853-6652
 2855 HIGHWAY 261
 NEWBURGH, IN. 47630

TITLE
UNIVERSAL TIE-BACK CLAMP ASSEMBLY

DWG NO.
KTC1540-01

DO NOT SCALE DRAWING

REV. #	DESCRIPTION	DATE	APP.	DRAWN	DATE
				R.E.H.	3-29-02
				CHECK	DATE
				APPROVAL	DATE

THIRD ANGLE PROJECTION	COMPANY CONFIDENTIAL INFORMATION CONTAINED HEREIN IS CONFIDENTIAL. IT IS TO BE USED SOLELY FOR THE PURPOSE PROVIDED, AND IT IS NOT TO BE DISCLOSED TO OTHERS WITHOUT THE PRIOR WRITTEN CONSENT OF TOWER INNOVATIONS	TOLERANCES	UNLESS OTHERWISE SPECIFIED DIMENSIONS ARE IN:
		.X± 3/32" ANGLES± 2°	INCHES
		.XX± 3/32" DRILLED HOLE± #1/32"	
		.XXX± 1/16" BURNED HOLE± #1/16"	