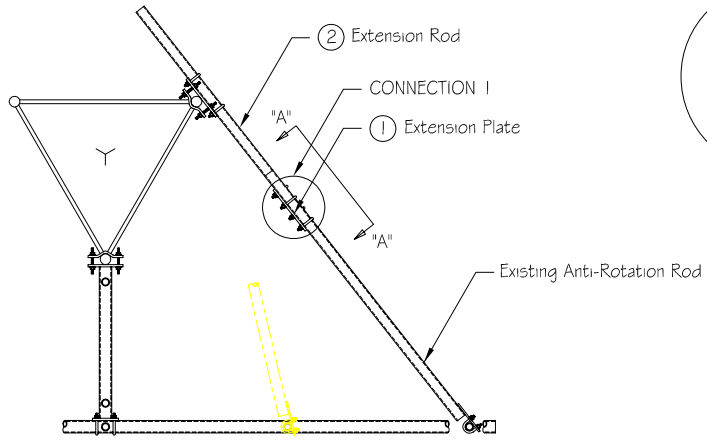
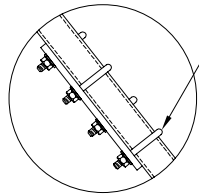


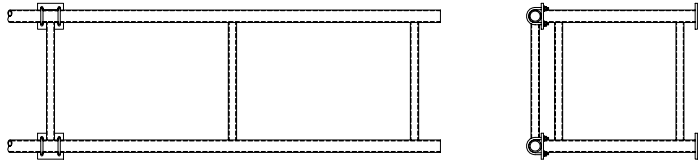
Typical Installation



CONNECTION I



1/2" Ø x 2-1/2" c-c x 3-3/4" isl A36 U-Bolts Used To Secure Extension Plate To Anti-Rot. Rods



STEEL PARTS

ITEM NO.	PART NO.	DESCRIPTION	QTY.
1*	GMEP-150	Extension Plate	1
2	MP1540X084	Extension Rod	1

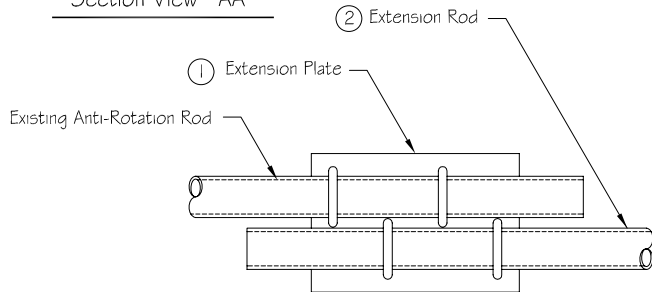
HARDWARE

ITEM NO.	PART NO.	DESCRIPTION	QTY.
1	UB50X250G	1/2" x 2-1/2" c-c x 3-3/4" isl A-36 U-Bolts	4
2	NU050G	1/2" H.D.G. Nuts	8
3	WL050G	1/2" H.D.G. Lockwashers	8

WEIGHT & ENGINEERING INFORMATION

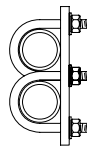
KIT NO.	WEIGHT (lbs.)	DESCRIPTION	CaAc (Sq. Ft.)
KTE6512-150-01	37	Extension Kit For 6.5' - 12' Face	???

Section View "AA"



KIT USE INFORMATION

- Will Mount To 1-1/2" Pipe Anti-Rotation Rod To Extend Rod Length To Accomodate 6.5' Through 12' Face Towers.
- Steel Parts Indicated Above With An "\*" Will Be Packed With The Hardware.



				PH# (812) 853-0595 FAX# (812) 853-6652 2855 HIGHWAY 261 NEWBURGH, IN. 47630	
REV. #	DESCRIPTION	DATE	APP.	DRAWN R.E.H.	DATE 6-22-00
				CHECK	DATE
				APPROVAL	DATE
THIRD ANGLE PROJECTION				COMPANY CONFIDENTIAL, INFORMATION CONTAINED HEREIN IS CONFIDENTIAL. IT IS TO BE USED SOLELY FOR THE PURPOSE PROVIDED, AND IT IS NOT TO BE DISCLOSED TO OTHERS WITHOUT THE PRIOR WRITTEN CONSENT OF TOWER INNOVATIONS	
TOLERANCES .X± 3/32" ANGLES± 2" .XX± 3/32" DRILLED HOLE± #1/32" .XXX± 1/16" BURNED HOLE± #1/16"				UNLESS OTHERWISE SPECIFIED DIMENSIONS ARE IN: INCHES	
DWG NO. KTE6512-150-01				REV -	
DO NOT SCALE DRAWING					